

- NOTES:
- CLOSE GRADED SURFACE COURSE MACADAM SHALL COMPLY WITH THE REQUIREMENTS OF CLAUSE 912 OF THE NRA'S 'SPECIFICATION FOR ROAD WORKS' AND SHALL SATISFY THE REQUIREMENTS OF TABLE 9/2. IT SHALL BE LAID & COMPACTED IN ACCORDANCE WITH CLAUSE 901 & CLAUSE 702
 - DENSE BITUMEN MACADAM BINDER COURSE SHALL COMPLY WITH THE REQUIREMENTS OF CLAUSE 908 OF THE NRA'S 'SPECIFICATION FOR ROAD WORKS' & SHALL SATISFY THE REQUIREMENTS OF TABLE 9/1. IT SHALL BE LAID & COMPACTED IN ACCORDANCE WITH CLAUSE 901 & CLAUSE 702.
 - SUB-BASE MATERIAL SHALL COMPLY WITH CLAUSE 808 GRANULAR MATERIAL TYPE B OF NRA'S 'SPECIFICATION FOR ROAD WORKS (SRW)' & SHALL SATISFY THE REQUIREMENTS OF TABLE 8/4 & 8/2.
 - SUB FORMATION & CAPPING MATERIAL SHALL COMPLY WITH CLAUSE 613 OF THE NRA'S 'SPECIFICATION FOR ROAD WORKS' & SHALL SATISFY THE REQUIREMENTS OF TABLE 6/1 & 6/2.
 - STONE BLINDING WITH 2-6.3mm AGGREGATE SHALL MEET THE FOLLOWING GRADINGS, IN ACCORDANCE WITH IS EN 13242

BS SIEVE SIZE (mm)	% BY MASS PASSING
14	100
10	98-100
6.3	80-99
2.0	0-20
1.0	0-5
 - CRUSHED STONE WITH 4-20mm AGGREGATE SHALL MEET THE FOLLOWING GRADINGS, IN ACCORDANCE WITH IS EN 13242

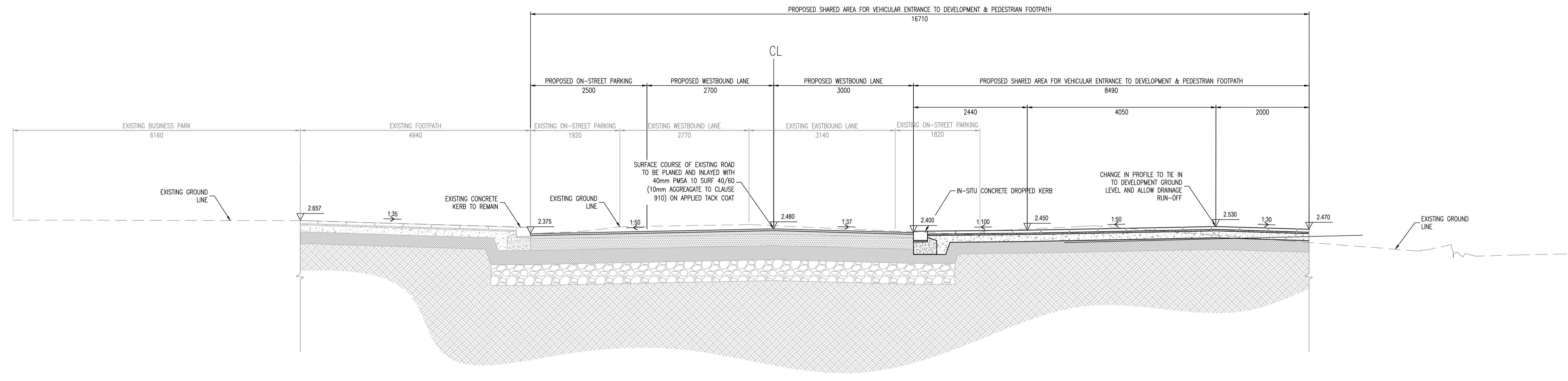
BS SIEVE SIZE (mm)	% BY MASS PASSING
40	100
31.5	98-100
20	90-99
10	25-70
4	0-15
5	0-5
 - ANY ROADS PROPOSED TO BE USED FOR CONSTRUCTION TRAFFIC ARE TO HAVE INCREASED DEPTH OF SUB-BASE FOR THE DURATION OF CONSTRUCTION IN ACCORDANCE WITH DBFL SPECIFICATIONS.
 - ALL WORKS SHALL BE COMPLETED IN ACCORDANCE WITH THE REQUIREMENTS OF THE LOCAL AUTHORITY.
 - ALL GEORIDS TO BE LAID IN ACCORDANCE WITH MANUFACTURERS SPECIFICATIONS.
 - ALL PERMEABLE PAVING SUB-FORMATION TO BE LAID TOWARD DRAINAGE PIPEWORK.
 - SUBGRADE CRB'S ARE TO BE APPROVED BY THE ENGINEER PRIOR TO COMMENCEMENT OF ROAD CONSTRUCTION

INFILL ROAD CONSTRUCTION

40mm of POLYMER MODIFIED STONE MASTIC ASPHALT SURFACE COURSE: PMSMA 10 SURF 40/60 (10mm AGGREGATE) TO CLAUSE 910 ON

GRANITE/CONCRETE FLAG FOOTPATH

63mm GRANITE/CONCRETE FLAG PAVING (SUBJECT TO SDC APPROVAL)
 30mm BEDDING 3:1 SAND/CEMENT
 150mm CBMG SUB-BASE SEMI-DRY CONCRETE 150mm CEMENT BOUND MATERIAL (CBM) CATEGORY 3 TO NRA SRW CLAUSE 1038. THE RATIO BY MASS OF CEMENT TO AGGREGATE SHALL BE SUFFICIENT TO PRODUCE A 7-DAY STRENGTH OF 10N/mm²



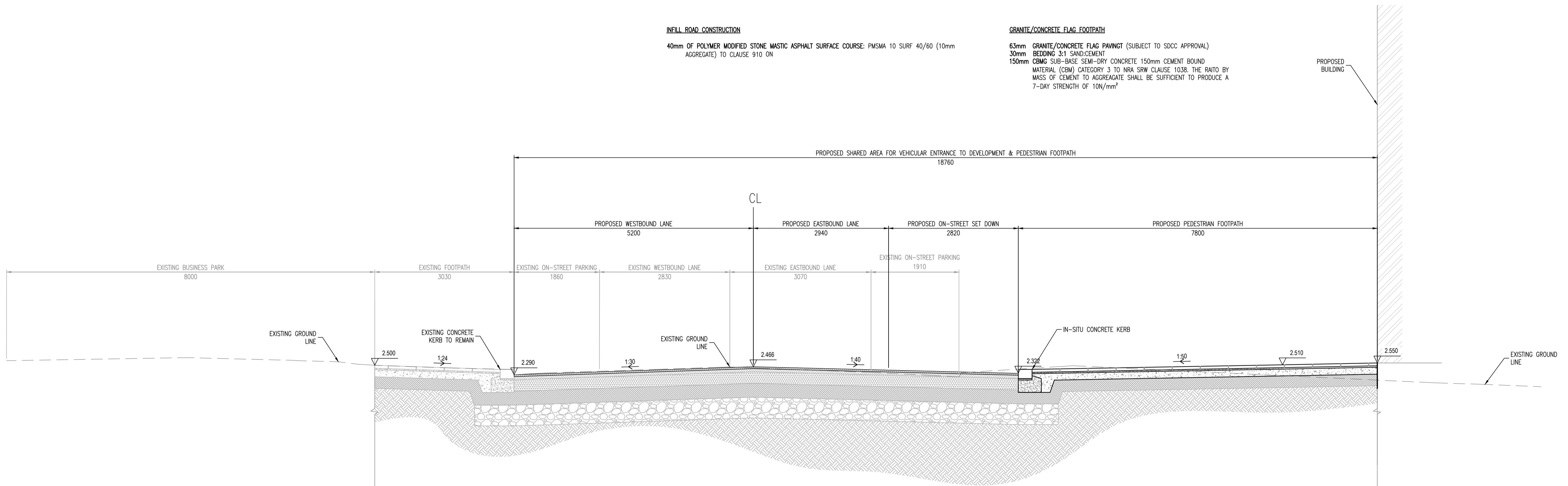
SECTION A-A
SCALE 1:50

INFILL ROAD CONSTRUCTION

40mm of POLYMER MODIFIED STONE MASTIC ASPHALT SURFACE COURSE: PMSMA 10 SURF 40/60 (10mm AGGREGATE) TO CLAUSE 910 ON

GRANITE/CONCRETE FLAG FOOTPATH

63mm GRANITE/CONCRETE FLAG PAVING (SUBJECT TO SDC APPROVAL)
 30mm BEDDING 3:1 SAND/CEMENT
 150mm CBMG SUB-BASE SEMI-DRY CONCRETE 150mm CEMENT BOUND MATERIAL (CBM) CATEGORY 3 TO NRA SRW CLAUSE 1038. THE RATIO BY MASS OF CEMENT TO AGGREGATE SHALL BE SUFFICIENT TO PRODUCE A 7-DAY STRENGTH OF 10N/mm²



SECTION B-B
SCALE 1:50

P01	02-12-20	PLANNING		BS	NJF
rev	date	description		by	chkd.
		A - Approved			
		B - Approved with comments			
		C - Do not use			
client approval					
suitability		issue purpose			
S2 - INFORMATION		PLANNING			

DBFL Consulting Engineers
 Civil, Structural & Transportation Engineering
 www.dbfl.ie

DUBLIN OFFICE: Ormond House, Upper Ormond Quay, Dublin 7, Ireland. PHONE: +353 (0) 1 450 6500
 CORK OFFICE: Phoenix House, Monahan Road, Cork. PHONE: +353 (0) 21 2024338
 WATERFORD OFFICE: Unit 2, The Chandlers, 1-2 O'Connell Street, Waterford, Ireland. PHONE: +353 (0) 51 309 550

project ref:

CASTLEFORBES DEVELOPMENT

drawing title

PROPOSED ROADWORKS CROSS-SECTIONS

client

GLENEVEAGH

designed by	author	scale	sheet size
NJF	BS	AS SHOWN	A1
drawing no.		revision	
	180159-2120	P01	